



## Carrier Logistics Inc. User Group Conference Sponsor Fact Sheet

- Dates:** Registration begins at 8:00 am on Thursday, April 26<sup>th</sup>. The program begins promptly at 8:30 am. The conference runs until 12:30 pm on Friday, April 27<sup>th</sup>, 2012 with optional one-on-one meetings running until 3:00 pm.
- Location:** The **Crowne Plaza White Plains Hotel** is situated in downtown White Plains, NY, which is in the heart of Westchester County. This 402-room property is only 30 minutes from Manhattan. Perfect for business and leisure travelers alike, the hotel is adjacent to world-class shopping at The Westchester with Neiman Marcus and Nordstrom.
- The hotel also offers a fleet of vans to transport guests to and from the Westchester County Airport, White Plains Metro North Train Station, as well as local businesses and attractions. The Crowne Plaza White Plains has upgraded its accommodations to a new level of comfort with The Sleep Advantage, which includes Quiet Zones, a Sleep CD with relaxation tips, Sleep Amenities and a guaranteed wake-up call. The hotel also features Wireless High Speed Internet access throughout the entire facility.
- Conference Format:** Please come prepared to participate in this program. The format will be VERY interactive with a lot of “give and take” between attendees, speakers and each other. The goal is to educate through the exchange of ideas, practices, and experiences.
- Sponsor Fee:** \$1,000 per company. **Includes:** Company Logo on All Conference Marketing Materials, Links to Your Website on Email Blasts, Your Company Name Included in All Press Releases, One Complimentary Registration, Exhibit Space, Company Logo in Handout Material, Special Recognition from the Podium, Attendee List for Follow up Post Event. **FYI:** There is no fee for CLI clients to attend this event.
- Bag Insert:** If you would like you may provide a gift/information in the registration bag. If you are interested, please supply 75 items/brochures to be included in the attendee gift bag handed out at registration by April 19. Mail/Ship them to Carrier Logistics Inc. 220 White Plains Road, 5<sup>th</sup> fl. Tarrytown, NY 10591 ATTN: Craig Lis.
- PowerPoint:** During the Thursday lunch each sponsor has 5 minutes to lead a presentation on their organization. Due to time constraints, Sponsors will be cut off after 5 minutes. If a sponsor would like to have an accompanying PowerPoint they must get the file to Craig Lis by April 20.
- Logos:** Sponsor must supply a .jpg logo with their sponsor forms or as soon as possible.
- Deadlines:** Logo: ASAP. Inserts: Arrive at CLI by April 19. PowerPoint file: April 20.
- Sponsor Participation:** CLI encourages our sponsors to attend the program. This way, you will understand the “hot buttons” for these participants, plus you’ll get to mingle and network with them at breaks, in the hallway, etc. In addition, we offer each sponsor a 5-minute advertising PowerPoint **opportunity** at the Thursday lunch. This gives you the opportunity to explain what you do and how you can **benefit the attendees**, so at the cocktail reception that evening, attendees are more comfortable approaching you at your exhibit table.

**Room Rates:** CLI has secured special rates for this event. Single or Double rooms are just \$169 a night. Go to [https://resweb.passkey.com/Resweb.do?mode=welcome\\_ei\\_new&eventID=8228667](https://resweb.passkey.com/Resweb.do?mode=welcome_ei_new&eventID=8228667) To reserve your room online or call **888-233-9527** and mention that you are attending the Carrier Logistics meeting (**CLI User Group** or **Carrier Logistics Meeting**) to receive the special conference rate. **The special rate is extended through the weekend so you can visit New York at this very competitive rate.**

#### **Hotel**

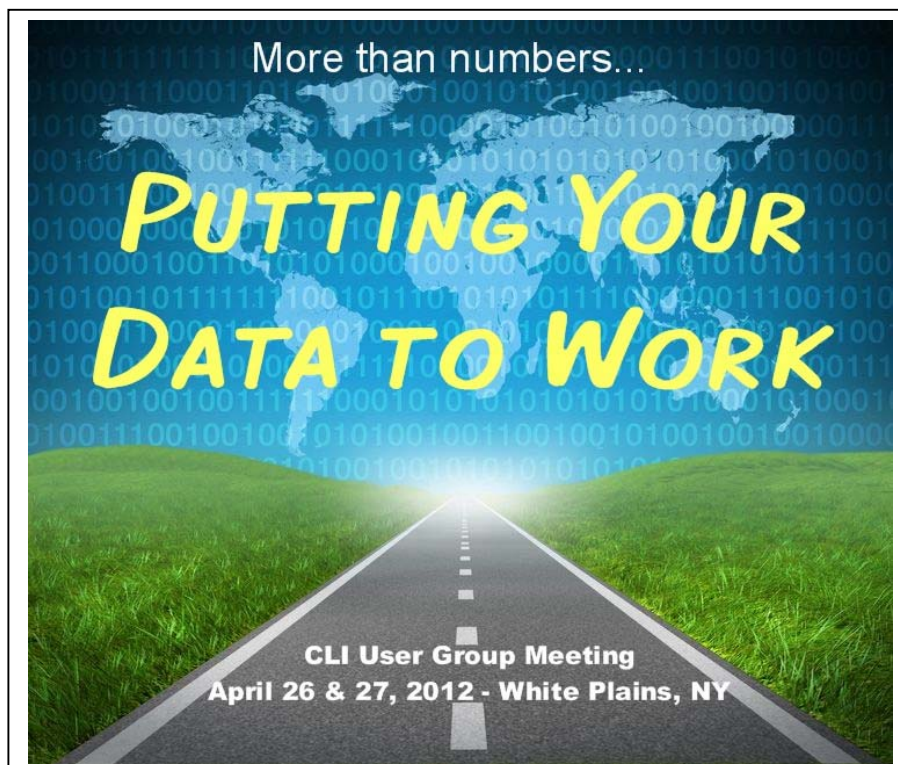
**Deadlines:** All reservations must be made by **April 6**. After that date the room rate will rise to \$249.

**Travel:** **LaGuardia Airport** is 35 miles from the hotel – 45 minutes by car.  
**Kennedy Airport** is 45 miles from the hotel - 60 minutes by car.  
**Westchester Airport** is 8 miles from hotel - 15 minutes by car. (Complimentary Airport Shuttle. Call the hotel at 914-682-0050 when you arrive for pick up.)  
**New York City** is 25 miles from the hotel - 40 minutes by car or 35 minutes by train from Grand Central Station – 5 minutes from the White Plains station.

**Attire:** Business casual attire is appropriate for this event.

**Reservations:** You are responsible for making your room reservations. Please call **888-233-9527** and mention the Carrier Logistics meeting to get the preferred meeting rate of \$169. All reservations must be made by **April 6**. After that date the room rate will rise to \$249.

**Weather:** The average temperature in April is 52 degrees. The average high is 57 degrees and the average low is 45 degrees so you will want to pack a jacket or sweater, especially if you plan on going out.





**CLI's Annual User Group Conference**  
**More than Numbers...Putting Your Data to Work**  
**April 26 & 27, 2012**  
**Crowne Plaza Hotel @ White Plains, NY**  
**SPONSORSHIP OPPORTUNITIES**

**Meet the decision makers and system users at CLI's Annual Conference PLUS sponsorship entitles you to complimentary admission to the entire program.**

- Yes I would like to be a sponsor. Cost to sponsor is \$1,000 by March 2. After March 2 cost is \$1,200. Make checks payable to Carrier Logistics Inc.

Company Name: \_\_\_\_\_

Company Address: \_\_\_\_\_

\_\_\_\_\_

\_\_\_\_\_

Phone: \_\_\_\_\_ Fax: \_\_\_\_\_

Contact Name: \_\_\_\_\_ Title: \_\_\_\_\_

Email Address: \_\_\_\_\_

Website: \_\_\_\_\_

Attendee Name: \_\_\_\_\_ Title: \_\_\_\_\_

**SPONSORSHIP INCLUDES:**

- Your Company Logo on All Conference Marketing Materials\*
- Links to Your Website on Email Blasts\*
- Your Company Name Included in All Press Releases\*
- One Complimentary Registration
- Exhibit Space†
- Company Logo in Handout Material
- Special Recognition from the Podium
- Attendee List for Follow Up Post Event

*Completed forms accompanied by payment must be returned no later than April 6, 2012. \*With paid sponsorship prior to mail/release dates. † Exhibit space is for a table top with two chairs and power outlet.*